

PM 17.0 TP



truck mounted cranes

Série CLASSIC

DESCRIPTION TECHNICAL FEATURES

Solid, simple and reliable, Pm 17 TP is a crane for multifunctional and uses, specially when intensive and repetitive operations are required. Its compact dimensions and low weight allow high performance. Internal supplementary activations ensure perfect protection from damage. Stand up control proving excellent visibility and easy operation.

MAIN TECHNICAL DATA

Maximum lifting moment: **14,9 tm**

Horizontal Hydraulic outreach: **10,70 m**

Vertical Hydraulic outreach: **14,35 m**

STANDARD CONFIGURATION

RACK SLEWING UP TO 400°

PROPORTIONAL VALVE BLOCK WITH COMPENSATED FLOW FOR ALL MOVEMENTS (with lever on right and left side)

MULTIFUNCTION RADIO REMOTE CONTROL

STAND UP CONTROL

1° AND 2° SUPPLEMENTARY ACTIVATIONS

MANUAL SWING UP OUTRIGGERS



Rack Slewing up to 400°



Proportional valve block with compensated flow for all movements



Single link

PM 17.0 TP

OPTIONAL

HIGH EFFICIENCY LED WORK LIGHTS

OIL TANK

Available configuration without radio

EQUIPMENTS SUMMARY

Equipments	Standard	Option
Slewing by rack	<input type="radio"/>	
Manueal swing up hydraulic outrigger	<input type="radio"/>	
Propotional valve block compensated	<input type="radio"/>	
Supplementary activations	<input type="radio"/>	
Stand up control	<input type="radio"/>	
Multifunctional radio control		<input type="radio"/>
Oil cooler		<input type="radio"/>
Oil tank		<input type="radio"/>
Stability Power System*		<input type="radio"/>
Safety Kit for outriggers		<input type="radio"/>
Slewing lock valve	<input type="radio"/>	
4 metres alarm sensor with control panel in cab*		<input type="radio"/>
LED work lamp		<input type="radio"/>



truck mounted cranes



High efficiency Led work light



Proportional valve block HCD4



IN accordance to the EU safety standards



Certified quality management system UNI ISO 9001:2008



In accordance to HD5S2 standard



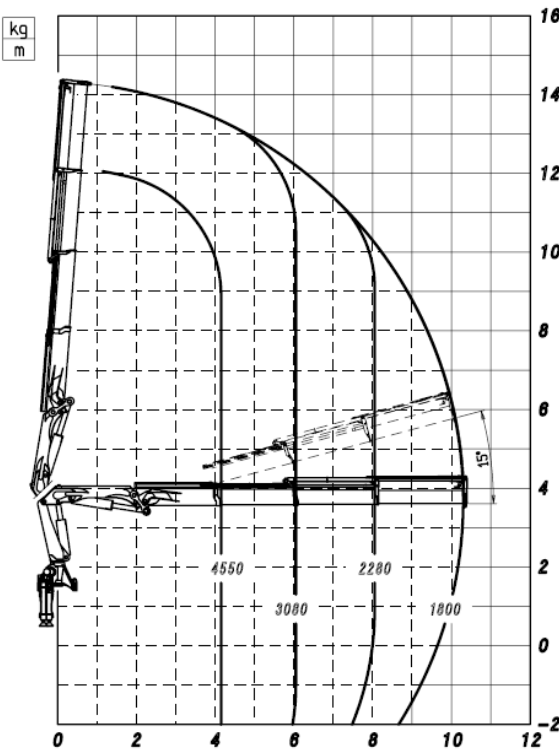
3 years of warranty on the structural parts

PM 17.0 TP



truck mounted cranes

PM 17023 TP



Série CLASSIC

TECHNICAL DATA PM 17023 TP

Maximum lifting moment	14,9m
Hydraulic outreach	
Horizontal	10,70m
Vertical	14,35m
Hydraulic system	
Max. oil flow	l/min 80 ÷ 100
Max. pressure	Mpa 27
Oil tank capacity	l 150
Slewing system	
Slewing angle	400°
Slewing moment	kNm 27,3
Max. working heel	%(°) 8,7(5)
Standard crane weight	
Empty oil tank	2040 Kg

TRUCKING CRANE COMBINATION

PTT/GVW	17	2STD	2 outriggers STD
18,0 TON	4		
19,0 TON	2 XL		
PTT/GVW	17	2 XL	2 outriggers XL
26,0 TON	2STD		
32,0 TON	2STD		
PTT: G.V.W.		4	4 outriggers

TECHNICAL DATA, DESCRIPTIONS AND ILLUSTRATIONS ARE MERELY INDICATIVE AND NOT BINDING. PM GROUP RESERVE THE RIGHT TO UPDATE THEM WITHOUT NOTICE.

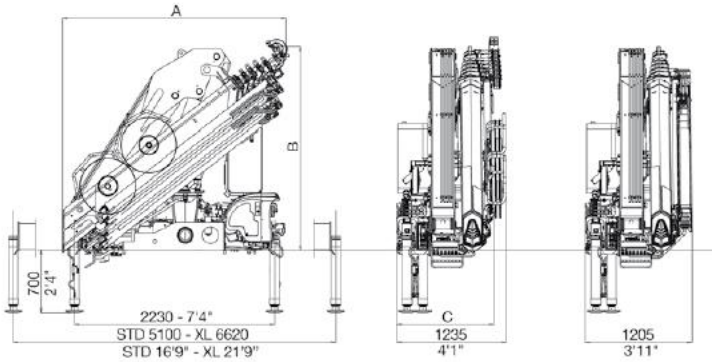
PM 17.0 TP



truck mounted cranes

DIMENSIONS

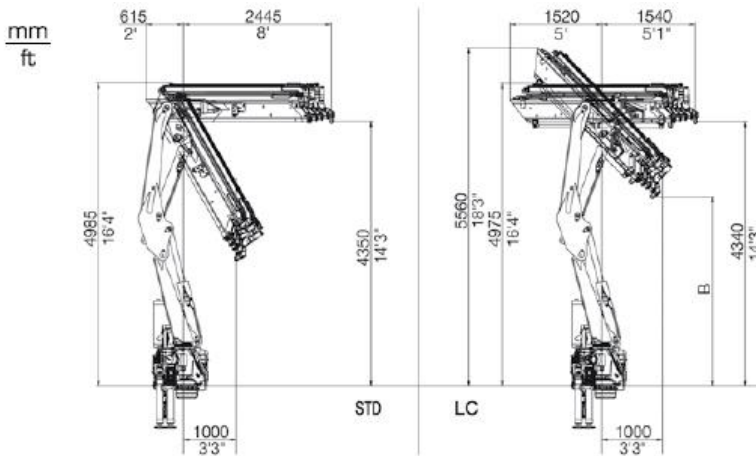
Standard Crane



17023	
B (mm) (ft)	2250 7'5"
C (mm) (ft)	965 3'2"

	STD	SXL
A (mm) (ft)	2460 8'1"	2480 8'2"

WORKING POSITIONS



17023	
A (mm) (ft)	2370 7'9"
B (mm) (ft)	3530 11'7"

ORIGINAL PM PARTS



Variable pump



Fixed pump



Supplementary stabilizers with integrated Stability Power System device

ACCESSORIES



Hydraulic Grapples



Rotator

PM 18.5 TP



truck mounted cranes

DESCRIPTION TECHNICAL FEATURES

PM 18.5 TP stands out for reliability and versatility. New functional design elements with internal supplementary activations emphasize the PM's attention maintenance of long-term value of its products. High variety of uses maximizes profitability throughout a crane's entire lifetime. Stand up control providing excellent visibility and easy operation.

MAIN TECHNICAL DATA

Maximum lifting moment: **15,7 tm**

Horizontal Hydraulic outreach: **10,70 m**

Vertical Hydraulic outreach: **14,35 m**

STANDARD CONFIGURATION

RACK SLEWING UP TO 400°

PROPORTIONAL VALVE BLOCK WITH COMPENSATED FLOW FOR ALL MOVEMENTS (with lever on right and left side)

MULTIFUNCTION RADIO REMOTE CONTROL

STAND UP CONTROL

1° AND 2° SUPPLEMENTARY ACTIVATIONS

MANUAL SWING UP OUTRIGGER



Rack Slewing up to 400°



Proportional valve block with compensated flow for all movements

PM 18.5 TP



truck mounted cranes

OPTIONAL

HIGH EFFICIENCY LED WORK LIGHTS

OIL TANK

Available configuration without radio



High efficiency LED work lights

EQUIPMENTS SUMMARY

Equipments	Standard	Option
Slewing by rack	<input type="radio"/>	
Manual swing up hydraulic outrigger	<input type="radio"/>	
Proportional valve block compensated	<input type="radio"/>	
Supplementary activations	<input type="radio"/>	
Stand up control	<input type="radio"/>	
Multifunction radio control		<input type="radio"/>
Oil cooler		<input type="radio"/>
Oil tank		<input type="radio"/>
Stability Power System*		<input type="radio"/>
Safety Kit for outriggers*		<input type="radio"/>
Slewing lock valve	<input type="radio"/>	
4 metres alarm sensor with control panel in cab *		<input type="radio"/>
LED work lamp		<input type="radio"/>



Proportional valve block HCD4

*compulsory for CE area

EN12999 In accordance to the EU safety standards

ISO Certified quality management system UNI ISO 9001:2008

HD5S2 In accordance to HD5S2 standard

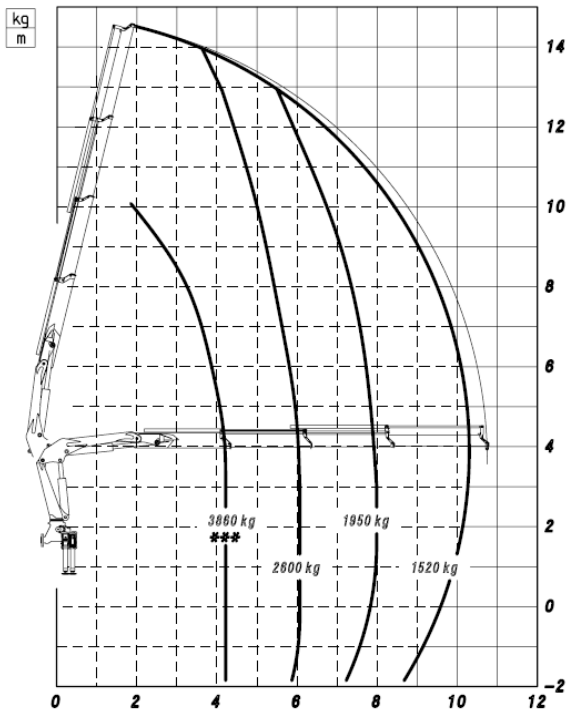
3 3 years of warranty on the structural parts

PM 18.5 TP



truck mounted cranes

PM 18523 TP



TECHNICAL DATA PM 18523 TP

Maximum lifting moment	tm 15,7
Hydraulic outreach	
Horizontal	m 10,70
Vertical	m 14,35
Hydraulic system	
Max. oil flow	l/min 80 ÷ 100
Max. pressure	Mpa 27
Oil tank capacity	l 150
Slewing system	
Slewing angle	400°
Slewing moment	kNm 27,3
Max. working heel	%(°) 8,7(5)
Standard crane weight	
Empty oil tank	Kg 2235

TRUCKING CRANE COMBINATION

PTT/GVW	18	2STD	2 outriggers STD
18,0 TON	4		
19,0 TON	2 XL		
PTT/GVW	18	2 XL	2 outriggers XL
26,0 TON	2STD		
32,0 TON	2STD		
		4	4 outriggers
PTT: G.V.W.			

TECHNICAL DATA, DESCRIPTIONS AND ILLUSTRATIONS ARE MERELY INDICATIVE AND NOT BINDING. PM GROUP RESERVE THE RIGHT TO UPDATE THEM WITHOUT NOTICE.

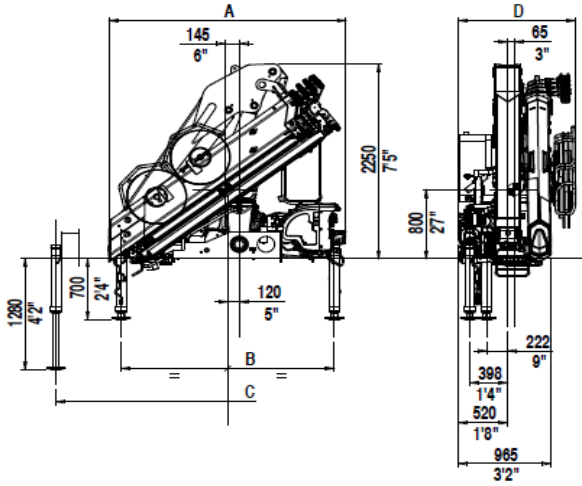
PM 18.5 TP



truck mounted cranes

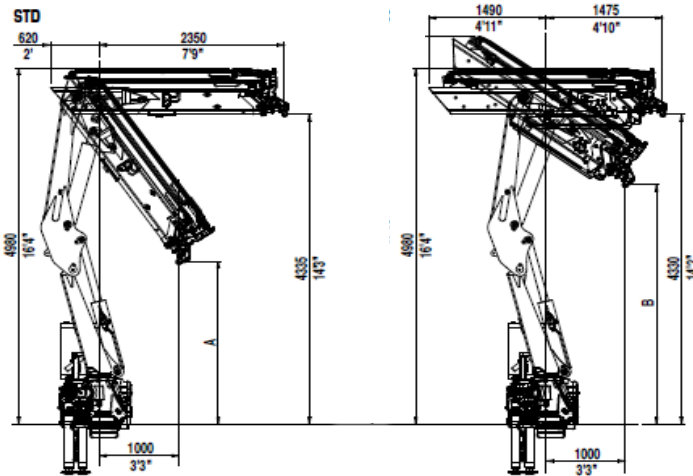
DIMENSIONS

Standard Crane



	STD	STD+R OT	SXL	SXL+R OT
A (mm) (ft)	2460 8'1"	2490 8'2"	2480 8'2"	2495 8'2"
B (mm) (ft)	2230 7'4"	2300 7'7"	2230 7'4"	2300 7'7"
C (mm) (ft)	5030 16'6"	5100 16'9"	6550 21'6"	6620 21'9"

WORKING POSITIONS



	18523
A (mm) (ft)	2370 7'9"
B (mm) (ft)	3530 11'7"

ORIGINAL PM PARTS



Variable pump



Fixed pump



Supplementary stabilizers with integrated Stability Power System device

ACCESSORIES



Hydraulic Grapples

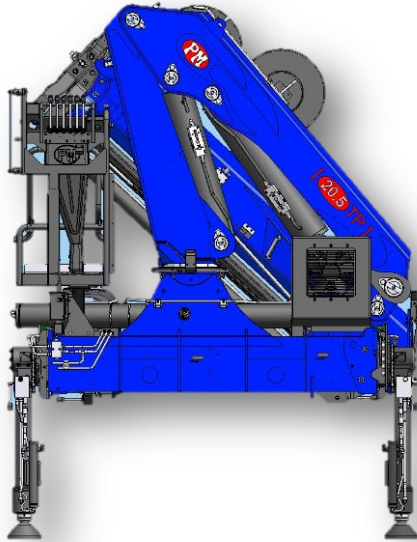


Rotator

PM 20.5 TP



truck mounted cranes



DESCRIPTION TECHNICAL FEATURES

Compactness, lightness, new construction concepts allow to this model to guarantee reliability, high performance and versatility. The articulation with link on the secondary arm permit maximum sensitivity of movement and high productivity. New functional design elements with internal supplementary activations emphasize the PM's attention maintenance of long-term value of its products, specially for intensive, repetitive operations. Stand up control providing excellent visibility and easy operation.

MAIN TECHNICAL DATA

Maximum lifting moment: **19,3 tm**

Horizontal Hydraulic outreach: **10,45 m**

Vertical Hydraulic outreach: **14,25 m**

STANDARD CONFIGURATION

RACK SLEWING UP TO 400°

PROPORTIONAL VALVE BLOCK WITH COMPENSATED FLOW FOR ALL MOVEMENTS (with lever on right and left side)

MULTIFUNCTION RADIO REMOTE CONTROL

SINGLE LINK

STAND UP CONTROL

1° AND 2° SUPPLEMENTARY ACTIVATIONS

MANUAL SWING UP OUTRIGGER



Rack Slewing up to 400°



Proportional valve block with compensated flow for all movements



Single link

PM 20.5 TP



truck mounted cranes

OPTIONAL.

HIGH EFFICIENCY LED WORK LIGHTS

OIL TANK

Available configuration without radio



High efficiency LED work lights

EQUIPMENTS SUMMARY

Equipments	Standard	Option
Slewing by rack	<input type="radio"/>	
Single link	<input type="radio"/>	
Manual swing up hydraulic outrigger	<input type="radio"/>	
Proportional valve block compensated	<input type="radio"/>	
Supplementary activations	<input type="radio"/>	
Stand up control	<input type="radio"/>	
Multifunction radio control		<input type="radio"/>
Oil cooler		<input type="radio"/>
Oil tank		<input type="radio"/>
Stability Power System*		<input type="radio"/>
Safety Kit for outriggers*		<input type="radio"/>
Slewing lock valve	<input type="radio"/>	
4 metres alarm sensor with control panel in cab *		<input type="radio"/>
LED work lamp		<input type="radio"/>

*compulsory for CE area



Proportional valve block HCD4

EN12999 In accordance to the EU safety standards

ISO Certified quality management system UNI ISO 9001:2008

HD5S2 In accordance to HD5S2 standard

3 3 years of warranty on the structural parts

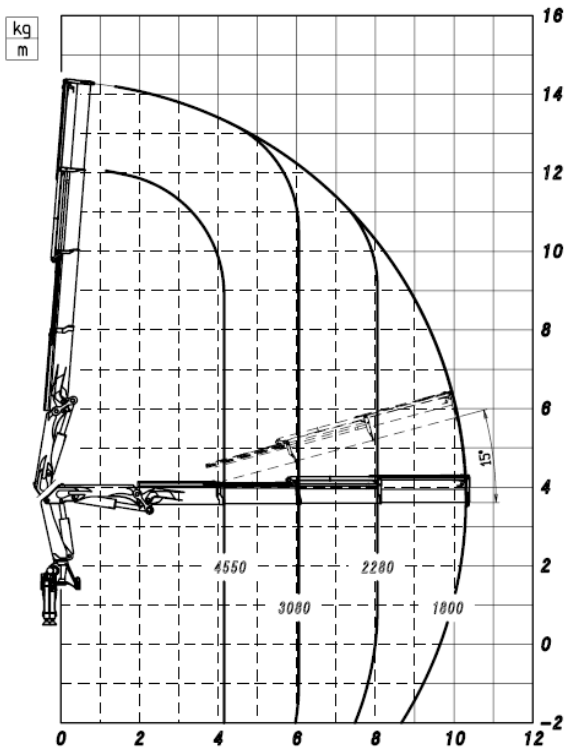
PM 20.5 TP



truck mounted cranes

Silver Series

PM 20523 TP



TECHNICAL DATA PM 20523 TP

Maximum lifting moment	tm 19,3
Hydraulic outreach	
Horizontal	m 10,45
Vertical	m 14,25
Hydraulic system	
Max. oil flow	l/min 80 ÷ 100
Max. pressure	Mpa 27
Oil tank capacity	l 150
Slewing system	
Slewing angle	400°
Slewing moment	kNm ...
Max. working heel	%(°) 8,7(5)
Standard crane weight	
Empty oil tank	Kg 2675

TRUCKING CRANE COMBINATION

PTT/GVW	20.5	2STD	2 outriggers STD
18,0 TON	4		
19,0 TON	2 XL		
PTT/GVW	20.5	2 XL	2 outriggers XL
26,0 TON	2 STD		
32,0 TON	2 STD		
		4	4 outriggers

PTT: G.V.W.

TECHNICAL DATA, DESCRIPTIONS AND ILLUSTRATIONS ARE MERELY INDICATIVE AND NOT BINDING. PM GROUP RESERVE THE RIGHT TO UPDATE THEM WITHOUT NOTICE.

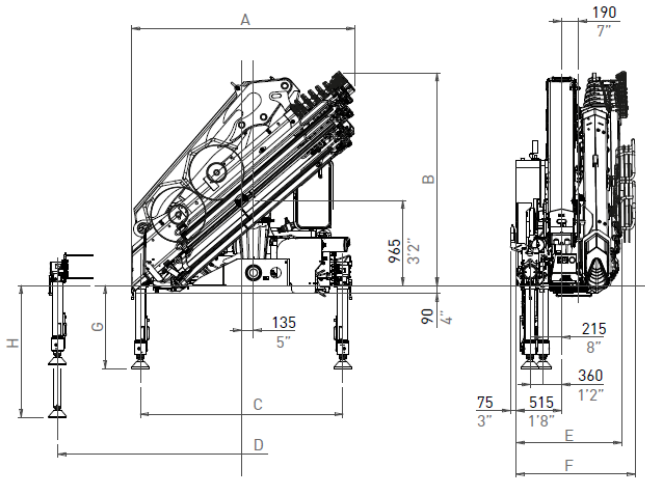
PM 20.5 TP



truck mounted cranes

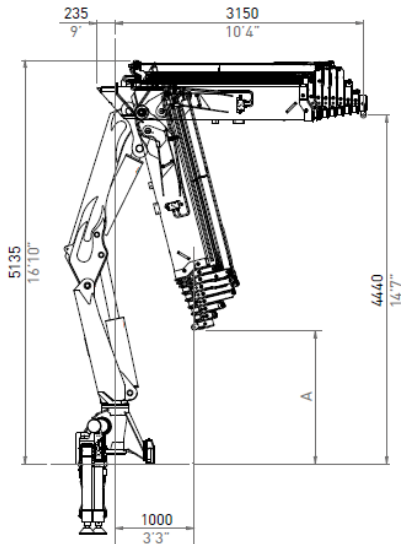
DIMENSIONS

Standard Crane



		20523
A (mm)		2510
(ft)		8'3"
B (mm)		2370
(ft)		7'9"
E (mm)		1075
(ft)		3'6"
F (mm)		1285
(ft)		4'3"

WORKING POSITIONS



(mm)/ft	Fissi	Fissi A	Fissi B	Rotanti	STD	STD+ROT	XL	XL+ROT	SXL	SXL+ROT
C	2250 7'5"	-	-	2300 7'7"						
D	-	-	-	-	5465 17'11"	5520 18'1"	6545 21'6"	6600 21'8"	7345 24'1"	7400 24'9"
G	-	860 2'10"	900 2'11"	940 3'1"	-	-	-	-	-	-
H	-	1460 4'9"	1500 4'11"	1540 5'1"	-	-	-	-	-	-

		20523
A (mm)		2255
(ft)		7'5"

ORIGINAL PM PARTS



Variable pump



Fixed pump



Supplementary stabilizers with integrated Stability Power System device

ACCESSORIES



Hydraulic Grapples



Rotator